



**GeneQuery™ Human Smooth Muscle Contraction and Diseases
qPCR Array Kit
(GQH-SMD)
Catalog #GK067**

Product Description

ScienCell's GeneQuery™ Human Smooth Muscle Contraction and Diseases qPCR Array Kit (GQH-SMD) is designed to profile the gene expression of 88 key genes involved in smooth muscle contraction and diseases that affect smooth muscle function. Vertebrates have three main types of muscle tissue: cardiac, skeletal, and smooth or non-striated. Smooth muscle fundamentally differs from the other two types in both regulation and function. Smooth muscle contraction is involuntary and it is found lining blood vessels, lymphatic vessels, the bladder, and the reproductive, GI, and respiratory tracts. Smooth muscle malfunctions can lead to a host of disorders such as achalasia (when smooth muscles fail to relax) and Hirschsprung's (muscle failure in the GI tract due to lack of nerves). Brief examples of how included genes may be grouped according to relevance are shown below:

- **Smooth muscle contraction:** SORBS3, TPM1, MYL9, ITGA1, CALM1, ACTA2
- **Smooth muscle differentiation:** CAMK2D, KCNH8, KLF4, MEF2A, SRF
- **Achalasia:** RET, NOS1, KIT, FLVCR1, MC2R
- **Hirschsprung's disease:** ECE1, EDN3, EDNRB, GDNF, SOX10

GeneQuery™ qPCR array kits are qPCR ready in a 96-well plate format, with each well containing one primer set that recognizes and efficiently amplifies a specific target gene's cDNA. The carefully designed primers ensure that: (i) the optimal annealing temperature in qPCR analysis is 65°C (with 2 mM Mg²⁺ and no DMSO); (ii) the primer set recognizes all known transcript variants of the target gene, unless otherwise noted; and (iii) only one gene is amplified. Each primer set has been validated by qPCR with melt curve analysis and gel electrophoresis.

GeneQuery™ qPCR Array Kit Controls

Each GeneQuery™ plate contains eight controls (Figure 1):

- Five target housekeeping genes (ACTB, GAPDH, LDHA, NONO, and PPIH), which enable normalization of data.
- The Genomic DNA (gDNA) Control (GDC), which detects gDNA contamination in cDNA samples. This primer set targets a non-transcribed region of the genome.
- Positive PCR Control (PPC), which tests whether samples contain inhibitors or other factors that may negatively affect gene expression results. The PPC consists of a predisposed synthetic DNA template and a primer set that can amplify it. The sequence of the DNA template is not present in the human genome and thus tests the efficiency of the polymerase chain reaction itself.
- The No Template Control (NTC), which can be used to monitor DNA contamination introduced during workflow (e.g. from such sources as reagents, tips, and the lab bench).

Kit Components

Component	Cat #	Quantity	Storage
GeneQuery™ array plate with lyophilized primers	GK067	1	4°C or -20°C
Optical PCR plate seal	N/A	1	RT
Nuclease-free H ₂ O	GQ100-1	2	4°C

Additional Materials Required (Materials Not Included in Kit)

Component	Recommended
Reverse transcriptase	First-Strand cDNA Synthesis Master Mix, 4x (ScienCell, Cat #MB6008)
cDNA template	Customers' samples
qPCR master mix	GoldNStart TaqGreen qPCR Master Mix (ScienCell, Cat #MB6018)

Quality Control

All primer sets are validated by qPCR with melt curve analysis and analyzed by gel electrophoresis. Single band amplification is confirmed for each set of primers.

Product Use

GQH-SMD is for research use only. It is not approved for human or animal use or for application in clinical or *in vitro* diagnostic procedures.

Shipping and Storage

This product is shipped at ambient temperature. Upon receipt, the plate should be stored at 4°C and is good for up to 12 months. For long-term storage (>1 year), store at -20°C in a manual defrost freezer.

Procedures

Note: The primers in each well are lyophilized.

1. Prior to use, allow plates to warm to room temperature.
2. Briefly centrifuge at 1,500x g for 1 minute before slowly peeling off the seal.
3. Prepare 20 μ l PCR reactions for one well as shown in Table 1.

Table 1

cDNA template	0.2 – 250 ng
2x qPCR master mix	10 μ l
Nuclease-free H ₂ O	variable
Total volume	20 μl

Important: Only use polymerases with hot-start capability to prevent possible primer-dimer formation. Only use nuclease-free reagents in PCR amplification.

4. Add the mixture of 2x qPCR master mix, cDNA template, and nuclease-free H₂O to each well containing the lyophilized primers. Seal the plate with the provided optical PCR plate seal.

Important: In NTC control well, do NOT add cDNA template. Add 2x qPCR master mix and nuclease-free H₂O only.

5. Briefly centrifuge the plates at 1,500x g for 1 minute at room temperature. For maximum reliability, replicates are strongly recommended (minimum of 3).
6. For PCR program setup, please refer to the instructions of the master mix of the user's choice. We recommend a typical 3-step qPCR protocol for a 200nt amplicon:

Three-step cycling protocol

Step	Temperature	Time	Number of cycles
Initial denaturation	95°C	10 min	1
Denaturation	95°C	20 sec	40
Annealing	65°C	20 sec	
Extension	72°C	20 sec	
Data acquisition	Plate read		
<i>Recommended</i>	<i>Melting curve analysis</i>		1
Hold	4°C	Indefinite	1

7. (Optional) Load the PCR products on 1.5% agarose gel and perform electrophoresis to confirm the single band amplification in each well.

Figure 1. Layout of GeneQuery™ qPCR array kit controls.

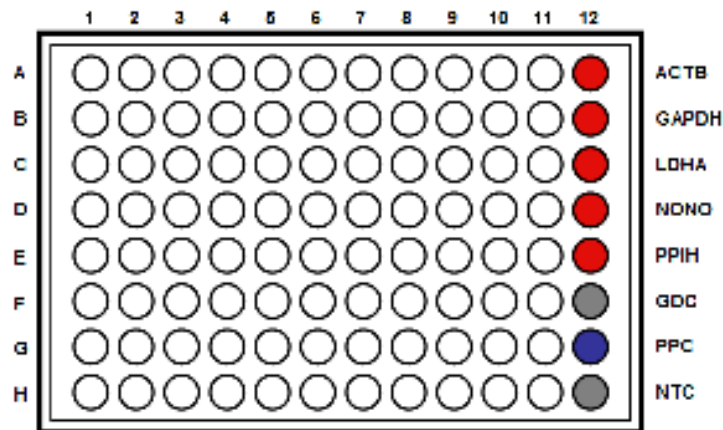


Table 2. Interpretation of control results:

<i>Controls</i>	<i>Results</i>	<i>Interpretation</i>	<i>Suggestions</i>
Housekeeping gene controls	Variability of a housekeeping gene's C _q value	The expression of the housekeeping gene is variable in samples; cycling program is incorrect	Choose a constantly expressed target, or analyze expression levels of multiple housekeeping genes; use correct cycling program and make sure that all cycle parameters have been correctly entered
gDNA Control (GDC)	C _q ≥ 35	No gDNA detected	N/A
	C _q < 35	The sample is contaminated with gDNA	Perform DNase digestion during RNA purification step
Positive PCR Control (PPC)	C _q > 30; or The C _q variations > 2 between qPCR Arrays.	Poor PCR performance; possible PCR inhibitor in reactions; cycling program incorrect	Eliminate inhibitor by purifying samples; use correct cycling program and make sure that all cycle parameters have been correctly entered
No Template Control (NTC)	Positive	DNA contamination in workflow	Eliminate sources of DNA contamination (reagents, plastics, etc.)

Rev.1

Figure 2. A typical amplification curve showing the amplification of a qPCR product.

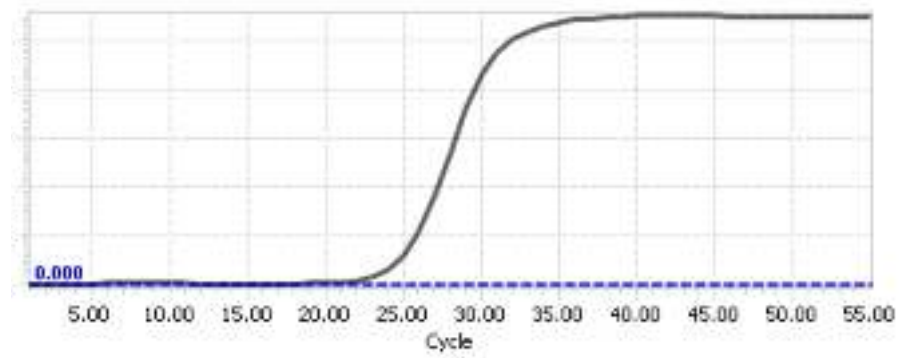
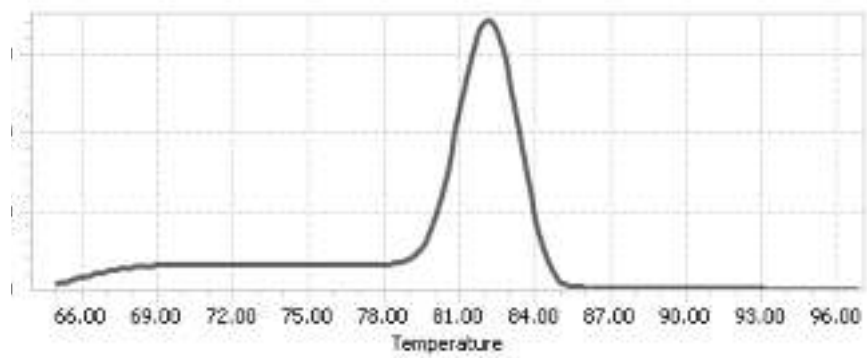


Figure 3. A typical melting peak of a qPCR product.



Quantification Method: Comparative $\Delta\Delta Cq$ (Quantification Cycle Value) Method

1. **Note:** Please refer to your qPCR instrument's data analysis software for data analysis. The method provided here serves as guidance for quick manual calculations.

You can use one or more housekeeping genes as a reference to normalize samples.

Important: We highly recommend using all 5 housekeeping genes included in this kit: ACTB, GAPDH, LDHA, NONO, and PPIH.

2. For a single housekeeping gene, ΔCq (ref) is the quantification cycle number change for that housekeeping gene (HKG) between an experimental sample and control sample.

$$\Delta Cq \text{ (ref)} = Cq \text{ (HKG, experimental sample)} - Cq \text{ (HKG, control sample)}$$

When using multiple housekeeping genes as a reference, we recommend normalizing using the geometric mean [1] of the expression level change, which is the same as normalizing using the arithmetic mean of ΔCq of the selected housekeeping genes.

$\Delta Cq \text{ (ref)} = \text{average} (\Delta Cq \text{ (HKG1)}, \Delta Cq \text{ (HKG2)}, \dots, \Delta Cq \text{ (HKG n)})$ (n is the number of housekeeping genes selected)

If using all 5 housekeeping genes included in this kit (ACTB, GAPDH, LDHA, NONO, and PPIH) use the following formula:

$$\Delta Cq \text{ (ref)} = (\Delta Cq(\text{ACTB}) + \Delta Cq(\text{GAPDH}) + \Delta Cq(\text{LDHA}) + \Delta Cq(\text{NONO}) + \Delta Cq(\text{PPIH})) / 5$$

Note: ΔCq (HKG) = Cq (HKG, experimental sample) - Cq (HKG, control sample), and ΔCq (HKG) value can be positive, 0, or negative.

3. For any of your genes of interest (GOI),

$$\Delta Cq \text{ (GOI)} = Cq \text{ (GOI, experimental sample)} - Cq \text{ (GOI, control sample)}$$

$$\Delta\Delta Cq = \Delta Cq \text{ (GOI)} - \Delta Cq \text{ (ref)}$$

$$\text{Normalized GOI expression level fold change} = 2^{-\Delta\Delta Cq}$$

References

[1] Vandesompele J, De Preter K, Pattyn F, Poppe B, Van Roy N, De Paepe A, Speleman F. (2002) "Accurate normalization of real-time quantitative RT-PCR data by geometric averaging of multiple internal control genes." *Genome Biol.* 3(7): 1-12.

Example: Comparative $\Delta\Delta Cq$ (Quantification Cycle Value) Method

Table 3. Cq (Quantification Cycle) values of 2 genes-of-interest and 5 housekeeping genes obtained for experimental and control samples.

Samples	Genes of Interest		Housekeeping Genes				
	GOI1	GOI2	<i>ACTB</i>	<i>GAPDH</i>	<i>LDHA</i>	<i>NONO</i>	<i>PPIH</i>
Experimental	21.61	22.19	17.16	17.84	20.12	19.64	26.40
Control	33.13	26.47	18.20	18.48	20.57	19.50	26.55

$$\begin{aligned}\Delta Cq(\text{ref}) &= (\Delta Cq(\text{ACTB}) + \Delta Cq(\text{GAPDH}) + \Delta Cq(\text{LDHA}) + \Delta Cq(\text{NONO}) + \Delta Cq(\text{PPIH})) / 5 \\ &= ((17.16 - 18.20) + (17.84 - 18.48) + (20.12 - 20.57) + (19.64 - 19.50) + (26.40 - 26.55)) / 5 \\ &= -0.43\end{aligned}$$

$$\begin{aligned}\Delta Cq(\text{GOI1}) &= 21.61 - 33.13 \\ &= -11.52\end{aligned}$$

$$\begin{aligned}\Delta Cq(\text{GOI2}) &= 22.19 - 26.47 \\ &= -4.28\end{aligned}$$

$$\begin{aligned}\Delta\Delta Cq(\text{GOI1}) &= \Delta Cq(\text{GOI1}) - \Delta Cq(\text{ref}) \\ &= -11.52 - (-0.43) \\ &= -11.09\end{aligned}$$

$$\begin{aligned}\Delta\Delta Cq(\text{GOI2}) &= \Delta Cq(\text{GOI2}) - \Delta Cq(\text{ref}) \\ &= -4.28 - (-0.43) \\ &= -3.85\end{aligned}$$

$$\begin{aligned}\text{Normalized GOI1 expression level fold change} &= 2^{-\Delta\Delta Cq(\text{GOI1})} \\ &= 2^{11.09} \\ &= 2180\end{aligned}$$

$$\begin{aligned}\text{Normalized GOI2 expression level fold change} &= 2^{-\Delta\Delta Cq(\text{GOI2})} \\ &= 2^{3.85} \\ &= 14.4\end{aligned}$$

Conclusion: Upon treatment, expression level of GOI1 increased 2,180 fold, and expression level of GOI2 increased 14.4 fold.



**GeneQuery™ Human Smooth Muscle Contraction and Diseases qPCR Array Kit
(GQH-SMD)
Catalog #GK067**

GeneQuery™ Human Smooth Muscle Contraction and Diseases qPCR Array Plate Layout* (*8 controls* in Bold and Italic)

	1	2	3	4	5	6	7	8	9	10	11	12
A	AAAS	CALD1	EDN3	HLA-DQA1	KCNN3	MEF2A	MYL6B	NNT	PSPN	SORBS1	TPM1	<i>ACTB</i>
B	ACHE	CALM1	EDNRB	HLA-DQB1	KIDINS220	MEF2B	MYL9	NOS1	PTPN22	SORBS3	TPM2	<i>GAPDH</i>
C	ACTA2	CALM2	ELK1	HMOX2	KIF1BP	MEF2C	MYLK	NOS2	PXDN	SOX10	TPM3	<i>LDHA</i>
D	ACTG2	CAMK2D	FLVCR1	HOXB5	KIT	MEF2D	MYLPF	NPY	PXN	SRF	TPM4	<i>NONO</i>
E	ARTN	CCND2	GDNF	ITGA1	KLF4	MFS7	MYOCD	NTF3	RASGEF1A	SYP	UCHL1	<i>PPIH</i>
F	ASCL1	CTSD	GFRA1	ITGB5	L1CAM	MYH11	NCAM1	NTRK3	RET	TAC1	VCL	<i>GDC</i>
G	BLVRB	DPYD	GFRA2	KCNH4	LMOD1	MYL12B	NGFR	PAX3	SEMA3C	TLN1	VIPR1	<i>PPC</i>
H	CALB2	ECE1	GUCY1A3	KCNH8	MC2R	MYL6	NKX2-5	PIGV	SEMA3D	TP53	ZEB2	<i>NTC</i>

* gene selection may be updated based on new research and development

Appendix. Plate type choice chart.

Plate type A

Brand	Model	kit catalog #
ABI / Life Tech	ABI 5700	GK067-A
	ABI 7000	GK067-A
	ABI 7300	GK067-A
	ABI 7500	GK067-A
	ABI 7700	GK067-A
	ABI 7900 HT	GK067-A
	QuantStudio	GK067-A
	ViiA 7	GK067-A
Bio-Rad	Chromo4	GK067-A
	iCycler	GK067-A
	iQ5	GK067-A
	MyiQ	GK067-A
	MyiQ2	GK067-A
Eppendorf / Life Tech	Matercyler ep realplex 2	GK067-A
	Matercyler ep realplex 4	GK067-A
Stratagene	MX3000P	GK067-A
	MX3005P	GK067-A

Plate type B

Brand	Model	kit catalog #
ABI / Life Tech	ABI 7500 Fast	GK067-B
	ABI 7900 HT Fast	GK067-B
	QuantStudio Fast	GK067-B
	StepOnePlus	GK067-B
	ViiA 7 Fast	GK067-B
Bio-Rad	CFX Connect	GK067-B
	CFX96	GK067-B
	DNA Engine Opticon 2	GK067-B
Stratagene	MX4000	GK067-B

Plate type C

Brand	Model	kit catalog #
Roche	Lightcycler 96	GK067-C
	Lightcycler 480 (96-well)	GK067-C